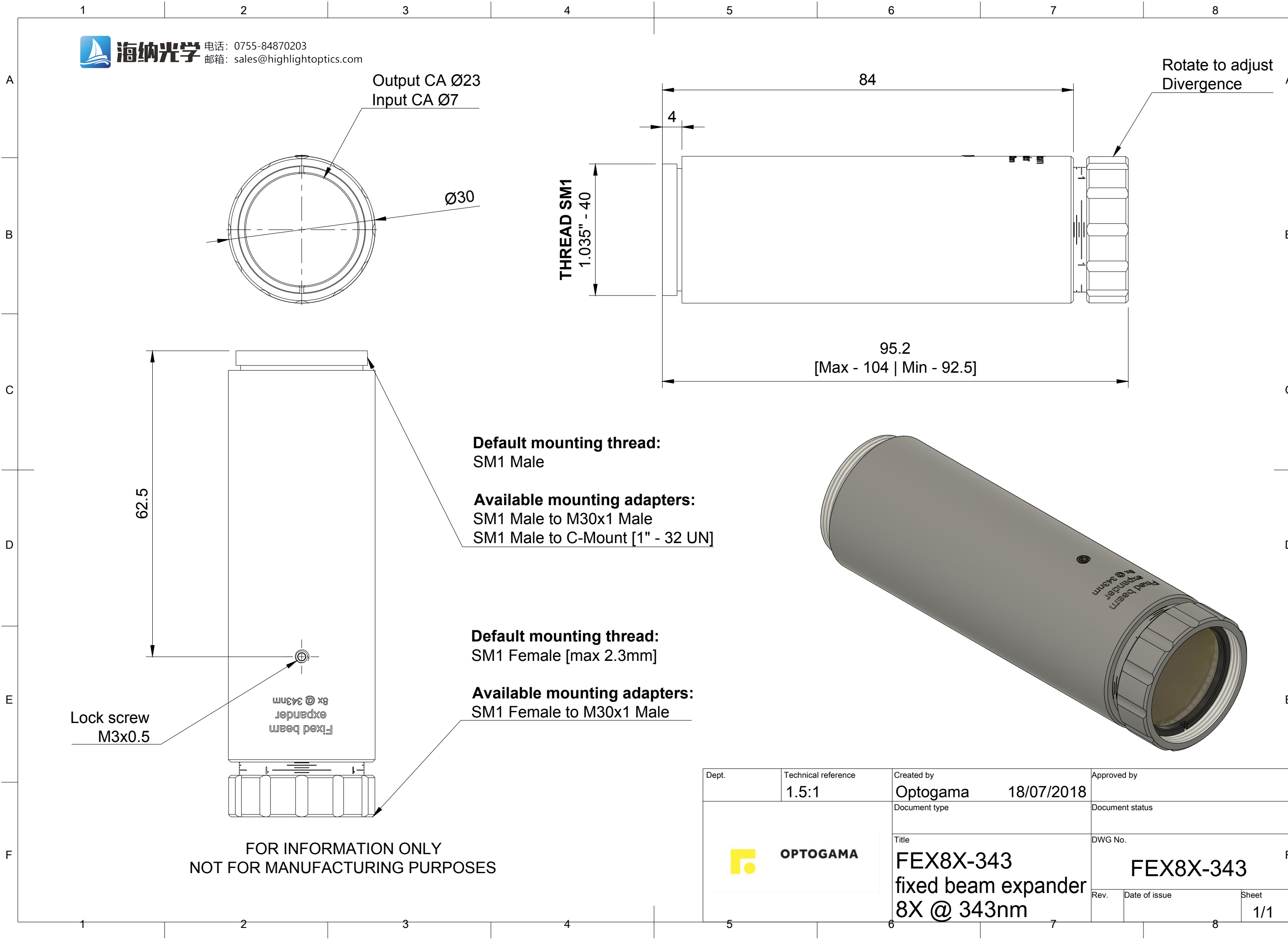




海纳光学 电话: 0755-84870203
邮箱: sales@highlightoptics.com



Default mounting thread:
SM1 Male

Available mounting adapters:
SM1 Male to M30x1 Male
SM1 Male to C-Mount [1" - 32 UN]

Default mounting thread:
SM1 Female [max 2.3mm]

Available mounting adapters:
SM1 Female to M30x1 Male

FOR INFORMATION ONLY
NOT FOR MANUFACTURING PURPOSES

Dept.	Technical reference 1.5:1	Created by Optogama 18/07/2018	Approved by
		Document type	Document status
		Title FEX8X-343 fixed beam expander 8X @ 343nm	DWG No. FEX8X-343
Rev.	Date of issue	Sheet 1/1	